

# EZ Grabber Quick Installation Guidance

## 1. INTRODUCTION

### Introduction

EZ Grabber is a capture equipment specified designed for capturing MPEG, which transmit screened important images to HDD by connection of AV and S-Video with high resolution as 720\*576. You can edit valuable DV/Digital 8 video recorder, Vidicon, VCR, DVD and camera to burn VCD, SVCD, DVD, MPEG4, AVI formats directly.

### 1.1 Features and application

#### Features:

- Small size
- Use newest USB2.0 chipset which provides high data transmit rate to ensure video and audio work long at the same time
- Powerful functions , installation easily with USB power
- Compatible with all laptop, LCD and USB2.0 port
- Supply many kinds of capture formats and MPEG models to make VCD, DVD, WMV convenient and easy to release on internet
- Supply multi-video and S-video inputs.
- Deluxe User Interface, software make you do film DIY more easily

### 1.2 Application scope:

Internet video meeting

Video phone

Video-audio animation transcribing and editing

Make VCD, DVD and Website

Enterprise bulletin and advertisement

### 1.3 System requirement

#### System requirement

Inter Pentium4 1.4G CPU, recommended Pentium4 2.0G or higher

RMA is 128M at least , recommend 256M or higher

A high speed USB2.0 interface

VGA card supports DirectX9.0

CD-ROM (for installation)

300MB HD space(install driver and application ,like EZ Grabber), 600MB to 3GB per hour for recording

### 1.4 Contents

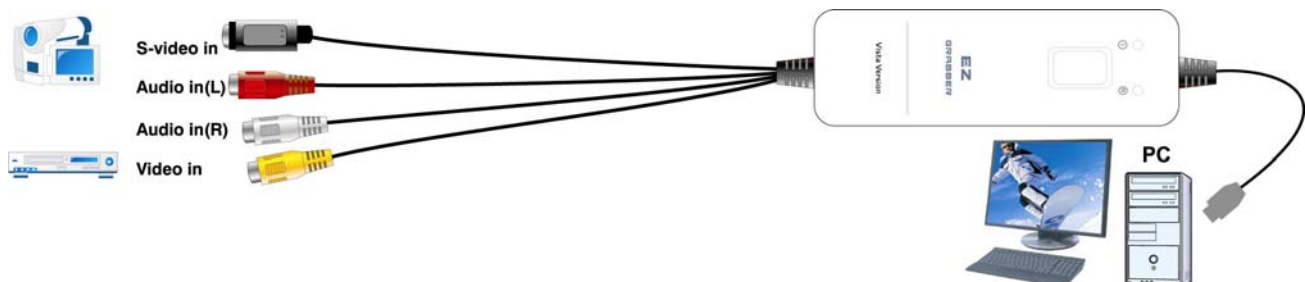
EZ Grabber box

AV cable 3-3

Software CD

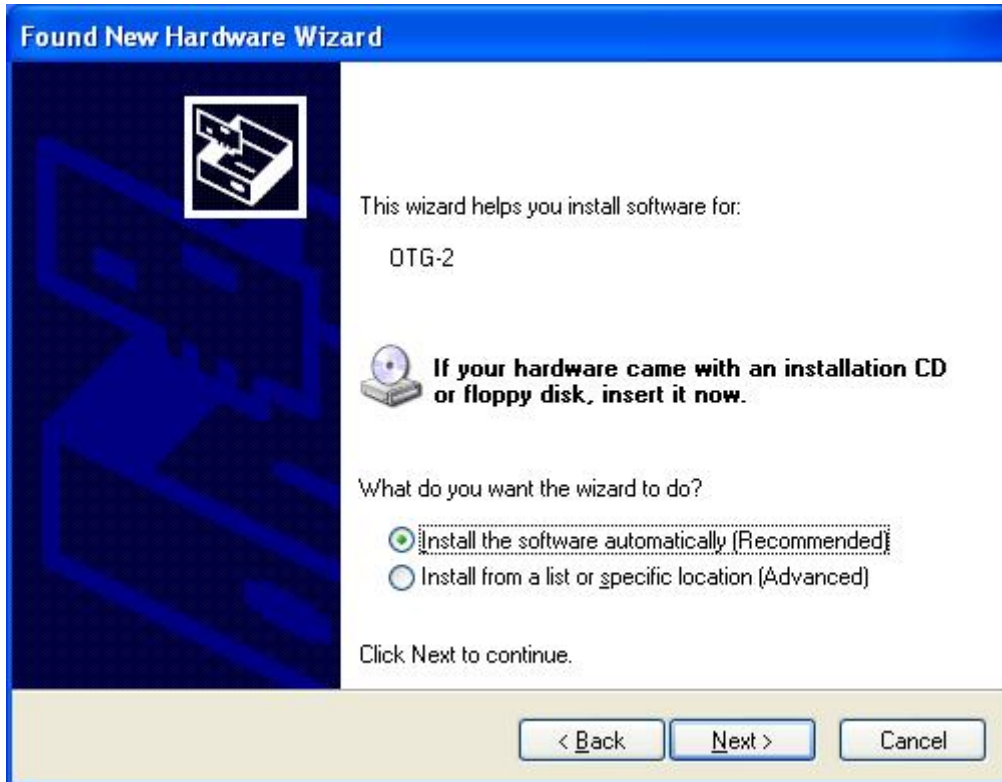
Ulead Video Studio 9 SE DVD (Optional)

### 1.5 EZ Grabber Connection



## 2. Driver and Application Installation

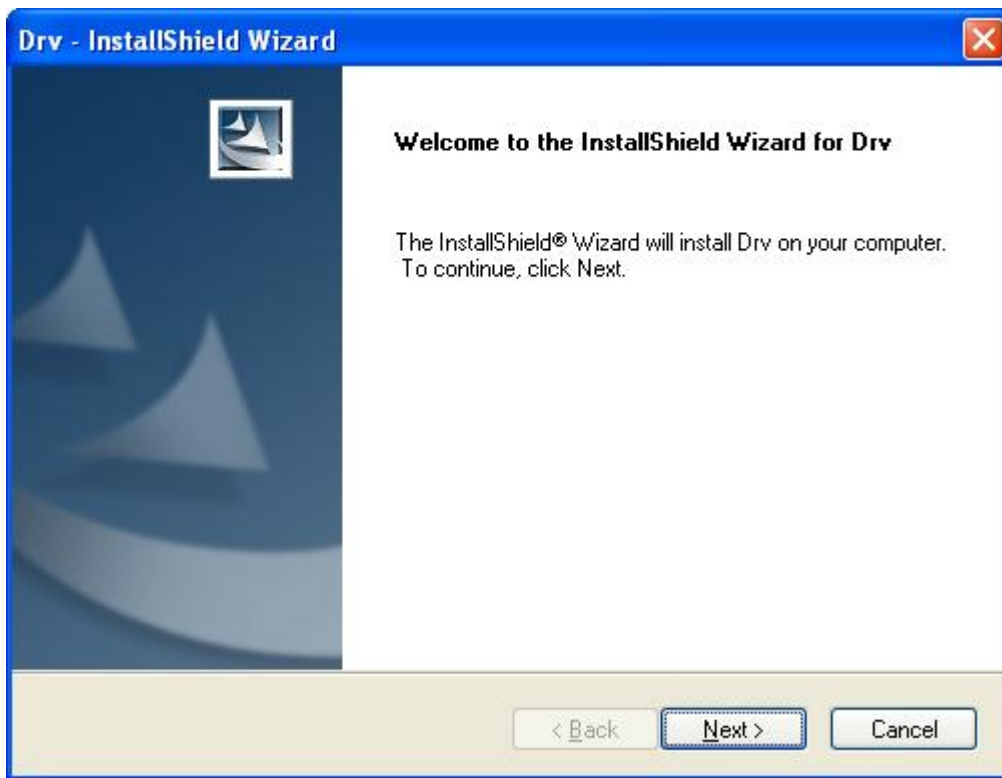
**Step1:** OS will remind a new hardware-- “New Hardware Device” was found. Please choose “Cancel”,



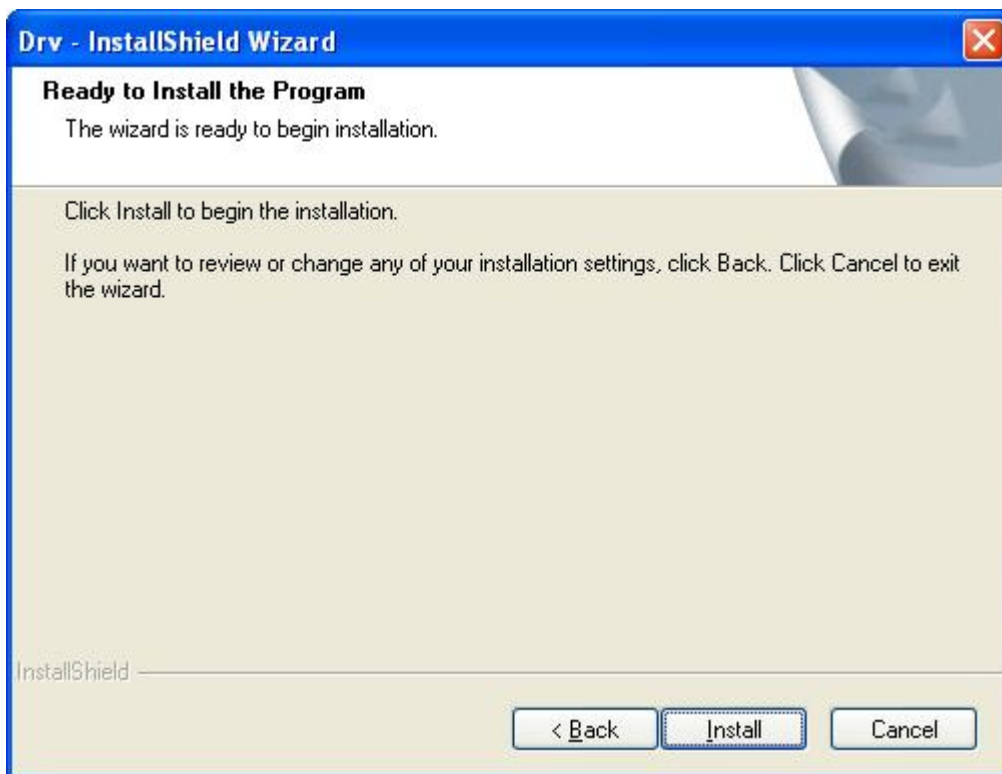
**Step2:** When CD is inserted, OS will guide you to the setup automatically. Click “**Driver Install**” or run **Drive\Setup.exe**,



**Step3:** Click “next” to continue installation



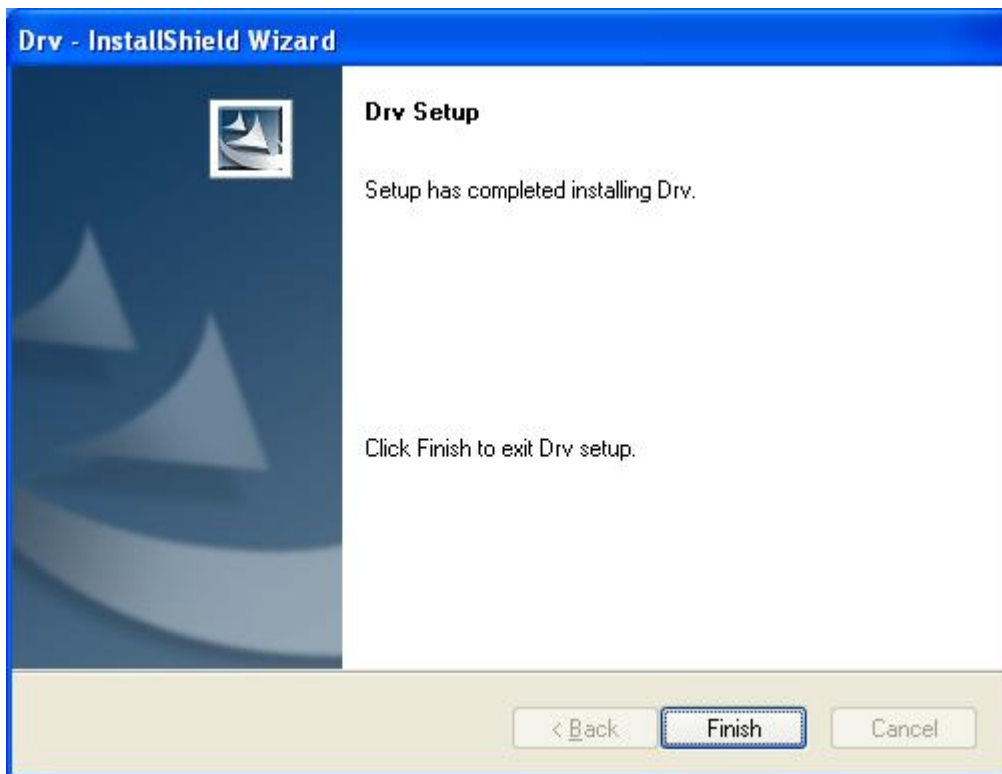
**Step4:**Click "Install" to continue installation driver



**Step5:** OS will promote to install devices. Click "Continue Anyway"(Only Windows XP)



**Step6:** Click “**Finish**” to completely install the Driver Software



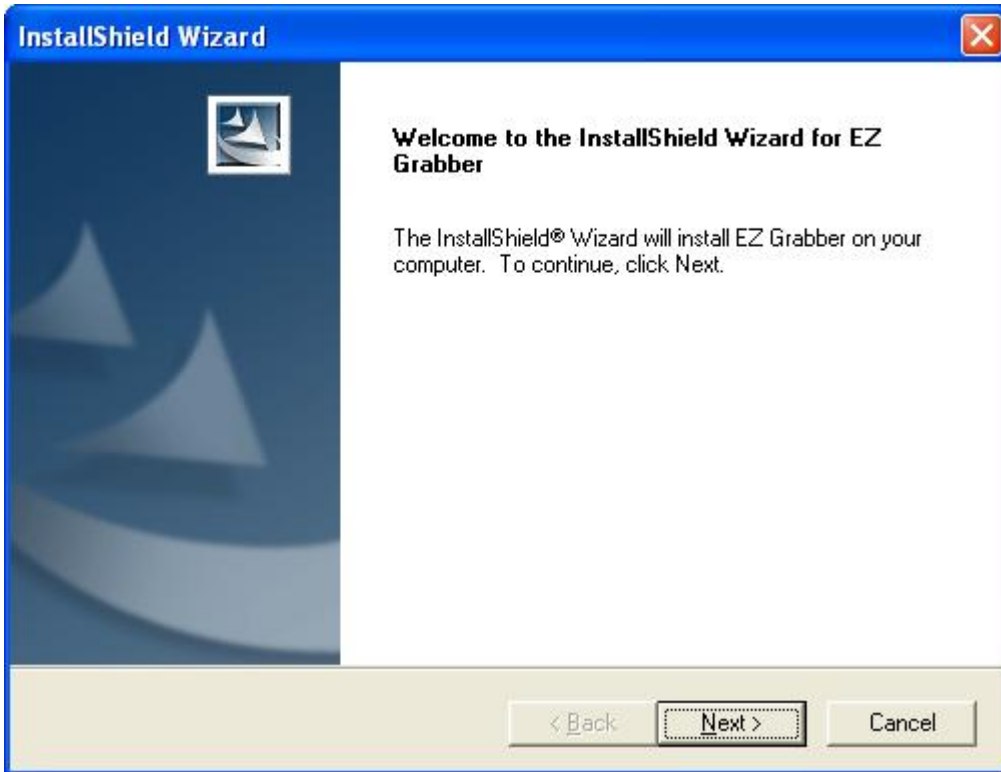
**Step7:**Click “**Software Install**” or run “**EZ Grabber\Setup.exe**” to install application,Choose your favorite language.



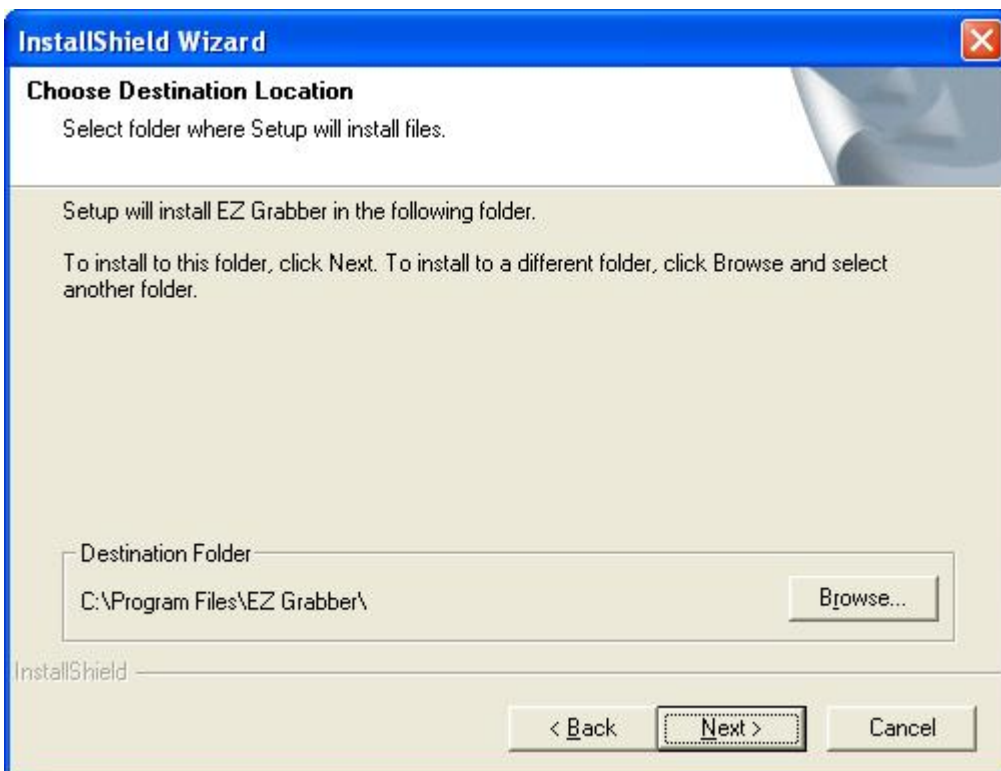
**Step8:** Please make sure DirectX9.0 installed before application installation. If not, system will prompt install it automatically



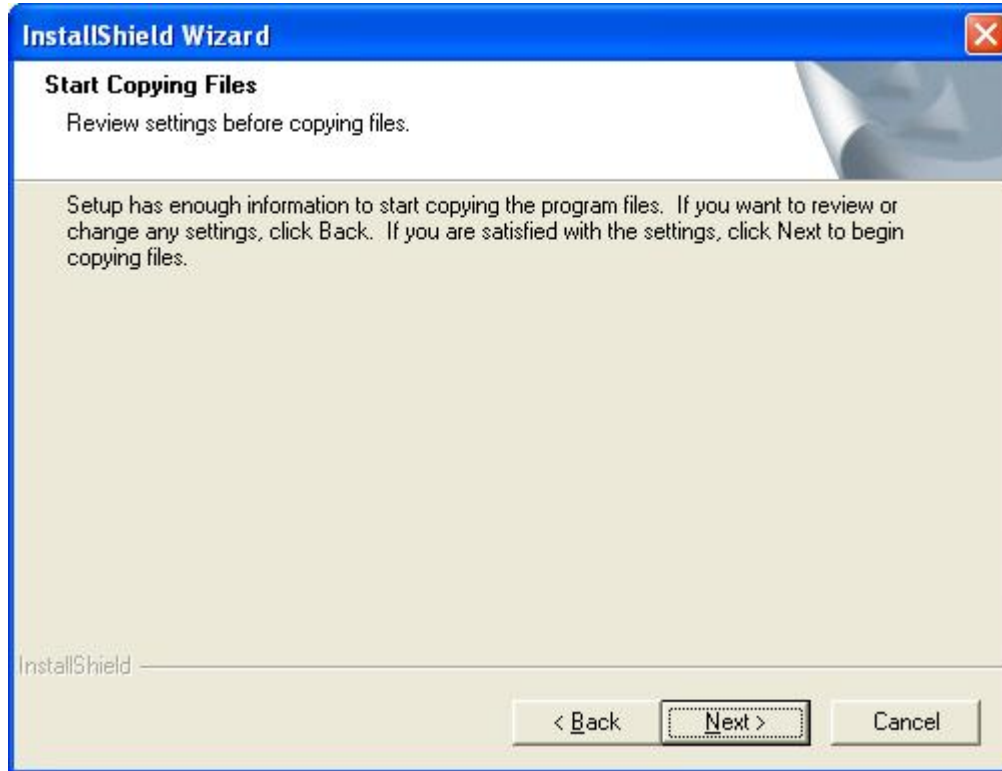
**Step9:** After that, click "next"



**Step10:** Choose install the components, and click "Next".



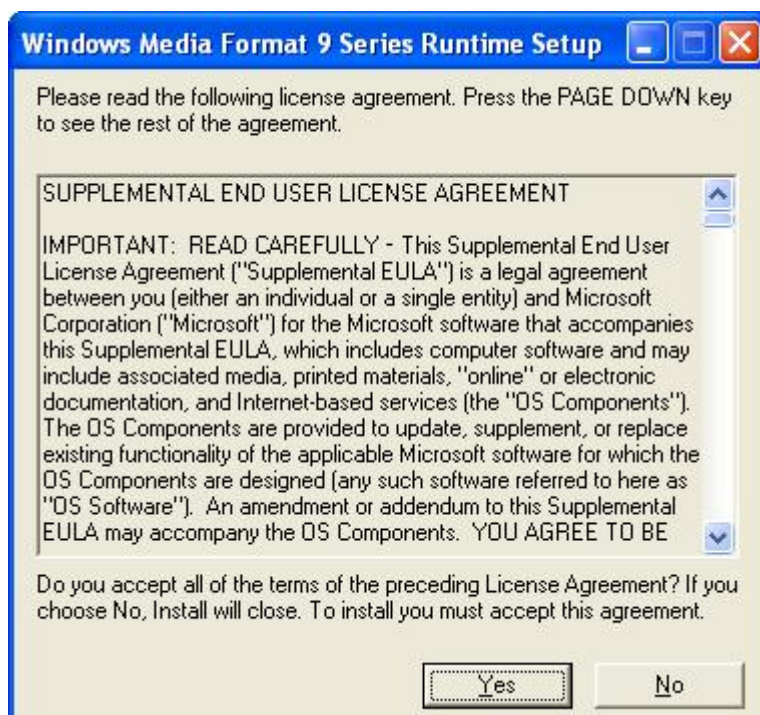
**Step11:**Prepare to install **EZ Grabber** click “next”



**Step 142:** Auto promote install “Windows Media Format9”, and click “Yes”.(Only Windows XP)



**Step 13:**Click “Yes” to continue “Windows Media Format9” installation. (Only Windows XP)



**Step14:** System will prompt that system will restart, please click “Finish”.



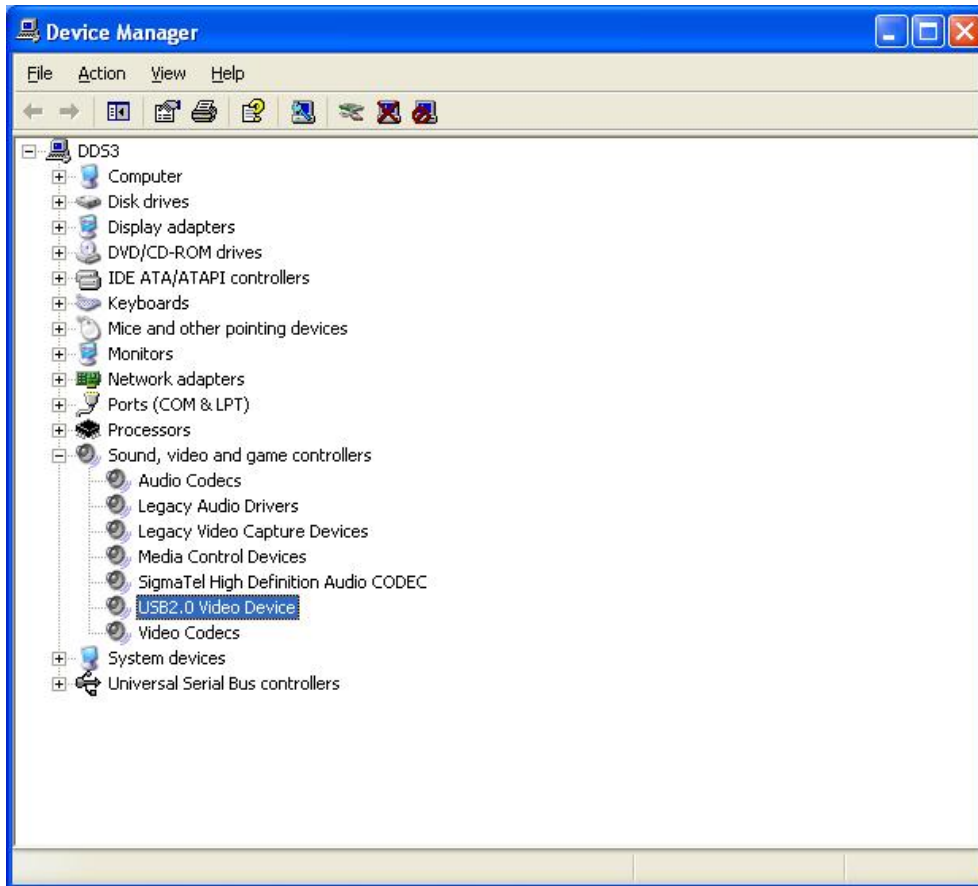
**Step15:** Icon on your desktop



EZ Grabber

**Step16:** When all finished, please check on open the control panel, select “**System**”, select “**system properties**”, select “**Device Manager**”, you can see four new device drivers installed.

## USB2.0 Video Device






### 3. EZ Grabber Application

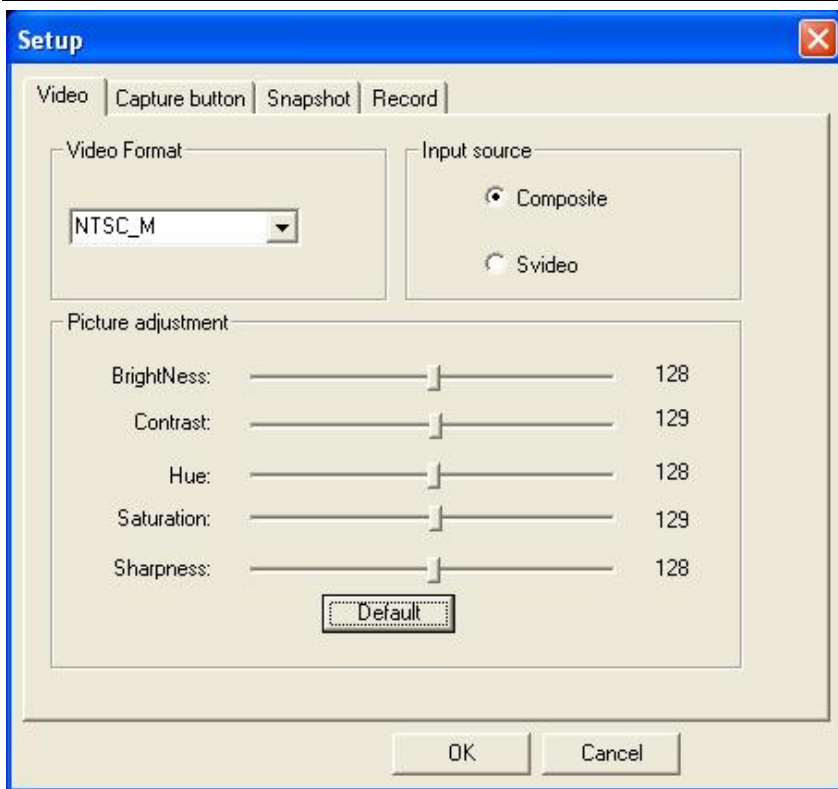
#### Main user Interface



NO	Description	NO	Description
1	Status	9	Play recorded files
2	Setting Setup menu	10	Status window
3	Snapshot	11	Stop playing files
4	Start to record	12	Shift stereo
5	Stop record	13	Back forward
6	Fast forward	14	Open the recorded file
7	Back forward	15	Minimize Full screen : Window and video desktop switch About: Show version and copyright. Exit EZ Grabber
8	Pause		

#### 3.1 Setting

Press  on panel, then you can adjust any function



3.1.1 Video source ,you can set video system and video source.

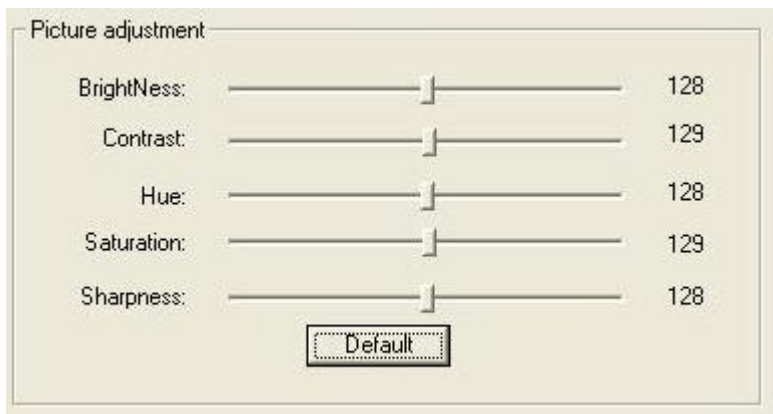
Video system as NTSC or PAL. Normally, device can choose the video system as signal. Video source as Video Composite and S-Video. Default is Video Composite.



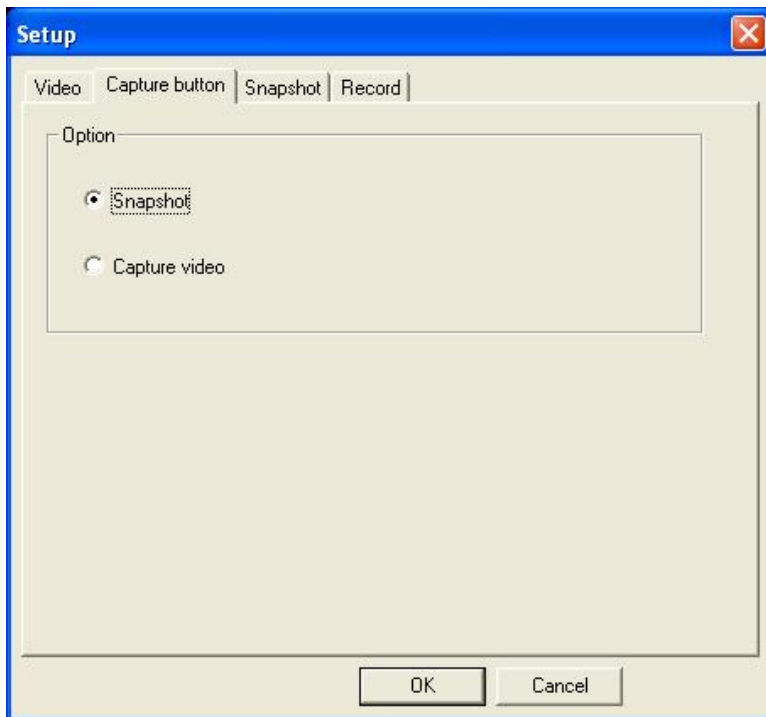
3.1.2 Color setting

You can change brightness, contrast, Hue, saturation and sharpness.

Press "Default" to return default status



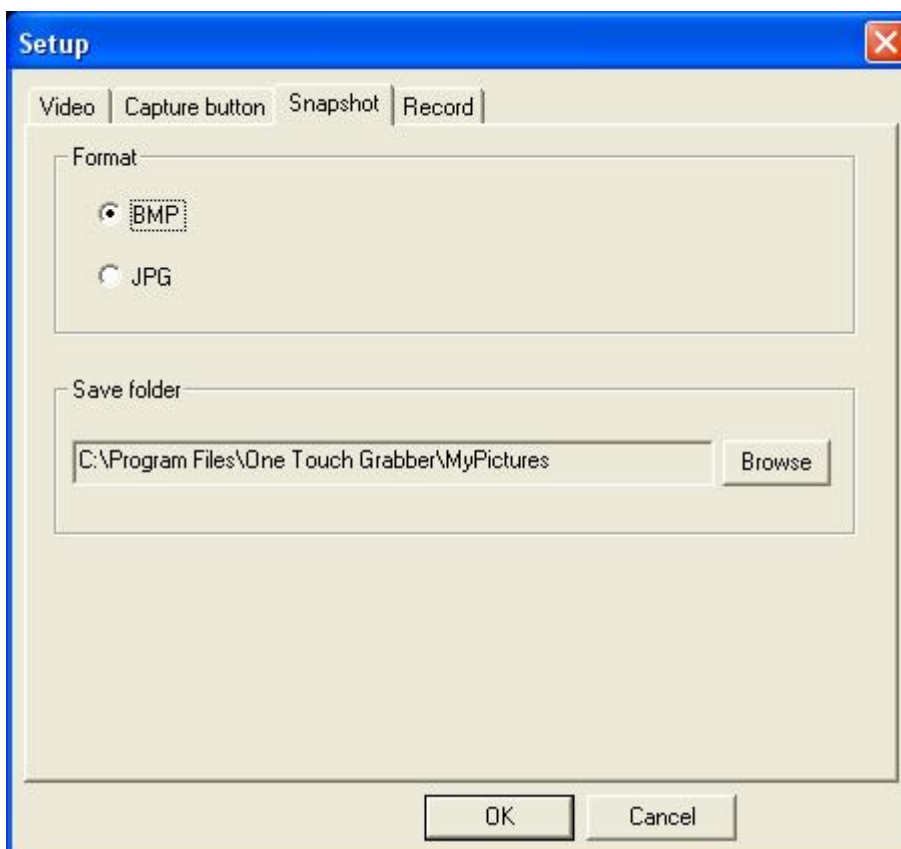
3.1.3 Capture button Optional



Snapshot: Capture picture.

Capture video: Capture video files.

### 3.1.4 Snapshot Optional



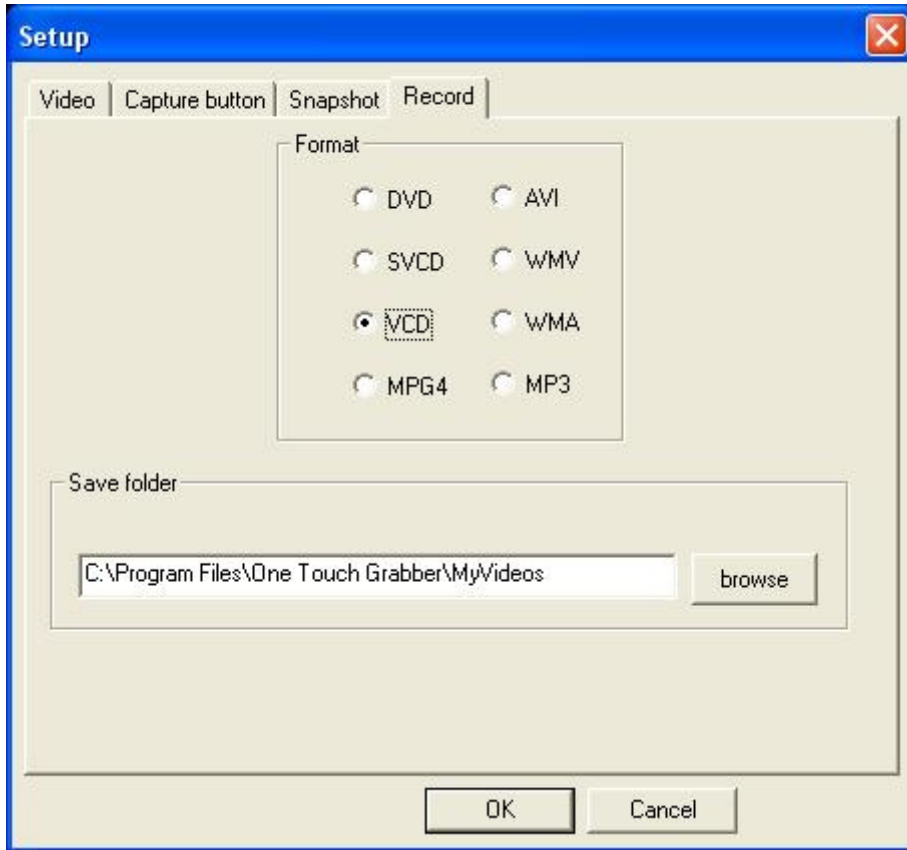
BMP: BMP file format.

JPG: JPEG file format.

Change destination directory for snapshot. Click "browse"

### 3.1.5 Video formats as DVD, SVCD, VCD, MPEG4, AVI, WMV, WMA and MP3.

Default is VCD.



Change destination directory for video file and snapshot. Click “browse”

#### 4. Mouse Right Click

##### 4.1 Most top

The TV Window always on the top

##### 4.2 Full screen mode

Enlarge the window to full screen, double click on the screen will return to window mode

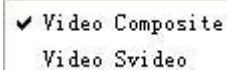
##### 4.3 Display control panel

Display /hide EZ Grabber

##### 4.4 Video input

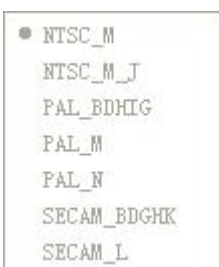
Select video source

There are two choices: Video Composite and S-Video. Default is Video Composite.



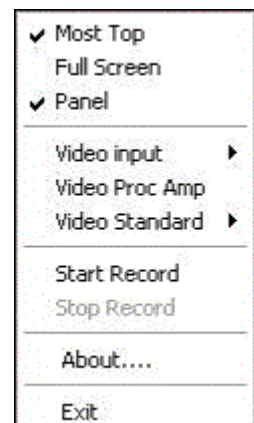
##### 4.5 Video model

Change the video format to PAL/NTSC/SECAM



##### 4.6 Record

You can record live TV program, the gray status mean unavailable



#### 4.7 Stop

Stop recording. When playing, this item is unavailable

#### 4.8 About

EZ Grabber version and copyright information

#### 4.9 Exit

Exit EZ Grabber

### 5. Use EZ Grabber

#### 5.1 Record

EZ Grabber is a application for live program or audio recording, supports MPEG-1 and MPEG-2 ,to save much space.

##### 5.1.1 Record:

Press  button to start recording, press  to stop it. EZ Grabber save file as default

##### 5.1.2 Status window


EZ Grabber show the status of application

##### 5.1.3 Recording space

Disk space depend on the format when you recording. There is some information for you reference.


Format	Resolution	Video bit rate (Mbps)	Audio bit rate (Kbps)	Disk Space
NTSC DVD	720*480	6	224	2.6GB/hr
NTSC SVCD	480*480	2.42	224	1GB/hr
NTSC VCD	320*240	1.15	224	600MB/hr
PAL DVD	720*576	6	224	2.6GB/hr
PAL SVCD	480*576	2.42	224	1GB/hr
PAL VCD	352*288	1.15	224	600MB/hr
AVI	352*288		224	
MPEG-4	352*288		224	
WMV	352*288	1.2	224	Around 650MB/hr
MP3			224	
WMA			224	

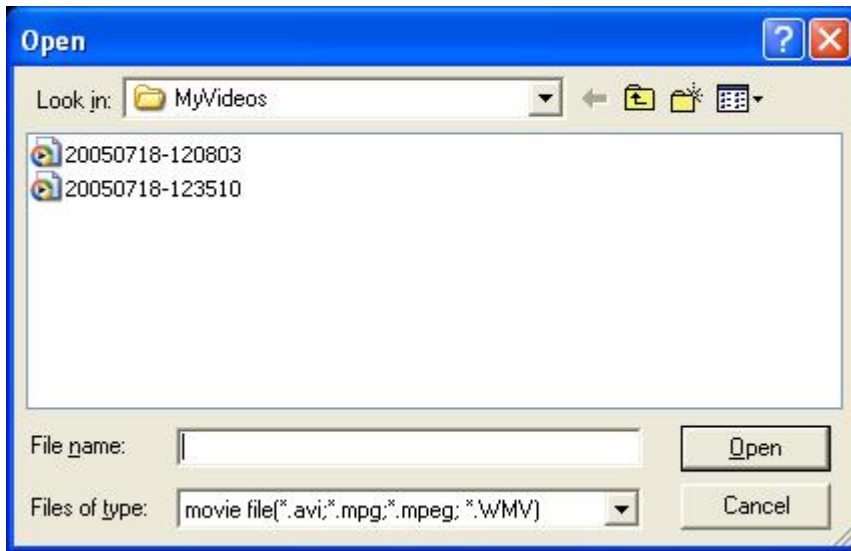
#### 5.2 Snapshot

When watching press  button to capture the picture and save as .bmp format. After pressing snapshot button, software will save still image automatically

#### 5.3 Video playing

EZ Grabber will play the recorded video files you made it before.


5.3.1 Click  to choose your favorite program and playing, double click or click "Open" on right click of mouse.



5.3.2 Status window will inform you the living program information when playing .

0:0:5/1:10:21

5.4 About EZ Grabber

Click "about" or  on right-click of mouse to show EZ Grabber version